

Specification for A-470 300 – 3000MHz Omni Directional Wideband antenna

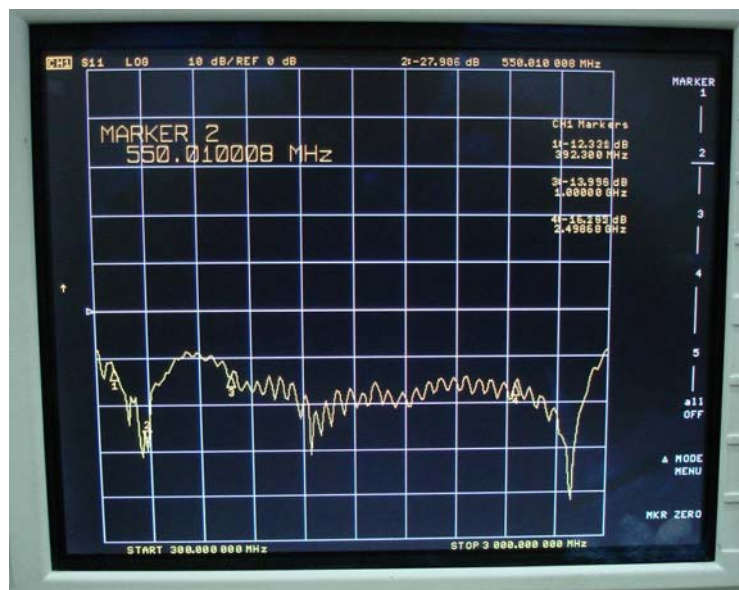


A-470 is A high efficiency super wideband antenna, which is designed for in-building RF communication systems application. The low IM performance makes this antenna is an idea choice for multi-channel communication systems.

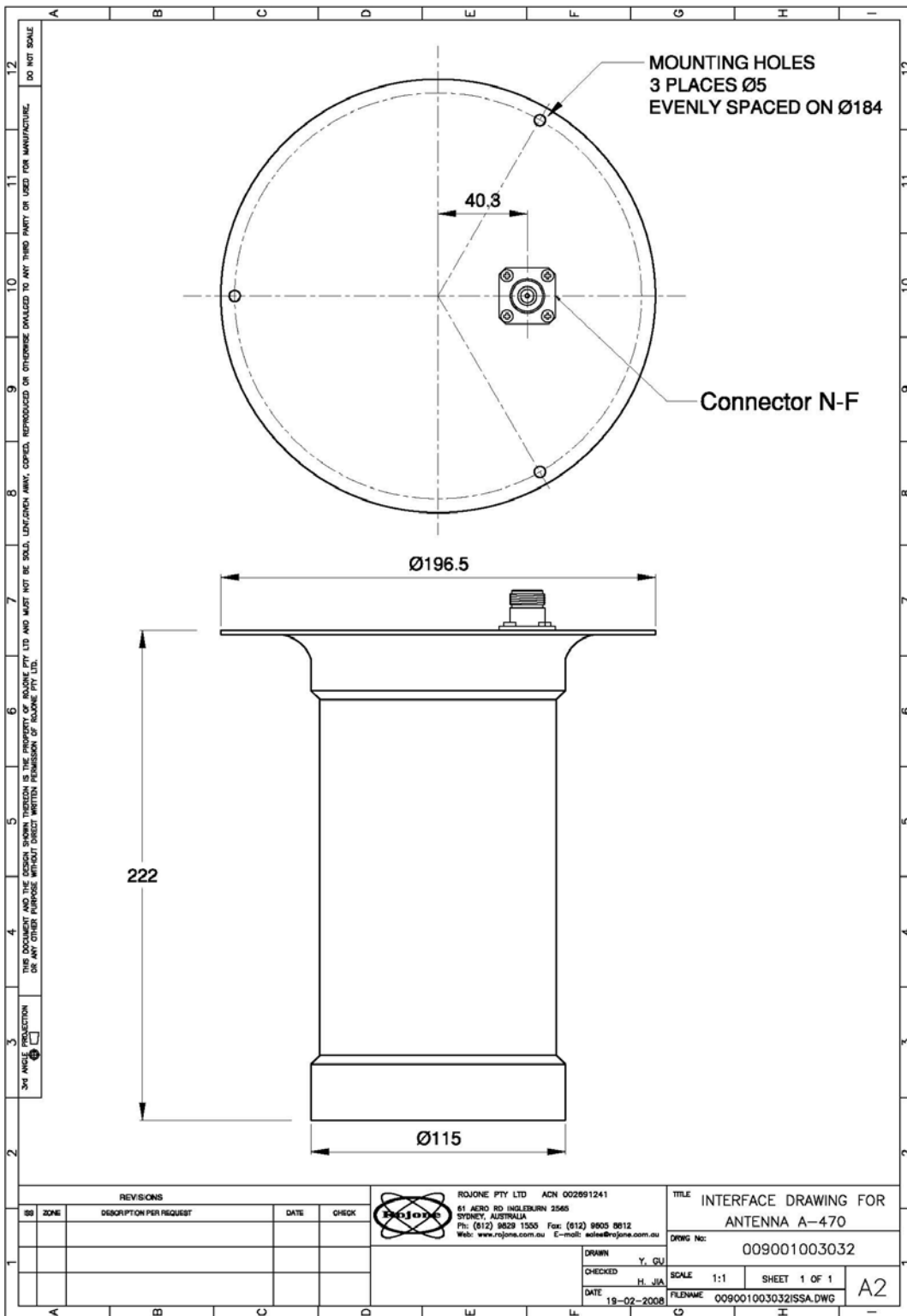
Specification

P/N	A-470
Frequency	300 – 3000 MHz
Max input power	100w
Input VSWR	$\leq 2 : 1$ *
Input Impedance	50 Ohm
RF Gain	2 – 5dBi
Polarization	Vertical Linear
Radiation Pattern	360 degrees Horizontal
IM3	< -140 dBc typ @ 30dBm x 2
RF Connector	N-F
Op temperature	-40 to + 80C
Humidity	100%
Weight	TBA

* for operation frequency below 600MHz, extra grounding plat may be required to improve the VSWR




Typical Return Loss from 300-3000MHz with extra grounding



THIS DRAWING AND THE DESIGN HEREON IS THE PROPERTY OF ROJONE PTY LTD AND MUST NOT BE SOLD, LOANED, REPRODUCED OR OTHERWISE DIVULGED TO ANY THIRD PARTY OR USED FOR MANUFACTURE OR ANY OTHER PURPOSE WITHOUT DIRECT WRITTEN PERMISSION OF ROJONE PTY LTD.

REVISIONS				
NO	ZONE	DESCRIPTION PER REQUEST	DATE	CHECK


ROJONE PTY LTD ACN 002891241
 51 AERO RD INGLEBURN 2566
 VICKEY, AUSTRALIA
 Ph: (012) 8629 1505 Fax: (012) 8605 8612
 Web: www.rojone.com.au E-mail: sales@rojone.com.au

TITLE INTERFACE DRAWING FOR ANTENNA A-470
DRWG No: 009001003032
SCALE 1:1 **SHEET** 1 OF 1
DATE 19-02-2008 **FILENAME** 009001003032ISSA.DWG

A2